

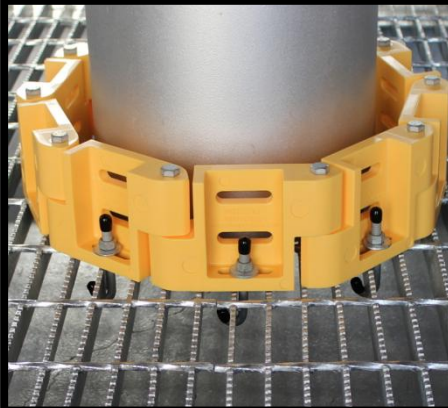
## Universal, Double Bar Safety Gate (UDG)



UDG-32

U.S. Patent No. 8,365,358 & 8,413,380

## Toeboard Link (T5)



Neatly Enclose Pipe Penetrations

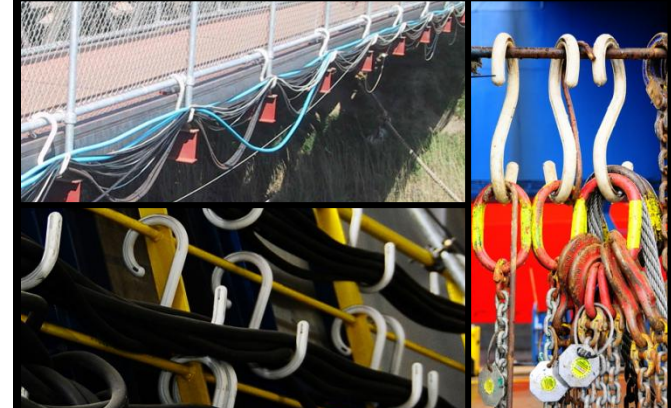


T5-J (J-Bolt)



T5-L (L-Bolt)

## CableSafe® Safety Hook (CS)



For Good Housekeeping And Reducing Trip Hazards

## UDG Double Bar Safety Gate

| Quantity | 22<br>560mm | 27<br>690mm | 32<br>820mm | 37<br>950mm |
|----------|-------------|-------------|-------------|-------------|
| 1 - 24   | \$170       | \$175       | \$185       | \$190       |
| 25 - 139 | \$164       | \$169       | \$179       | \$184       |
| 140 +    | \$158       | \$163       | \$173       | \$178       |

## T5

## Toeboard Link

| Quantity   | T5-J<br>Each | T5-L<br>Each |
|------------|--------------|--------------|
| 10 - 100   | \$12.00      | \$12.00      |
| 110 - 1600 | \$10.50      | \$10.50      |
| 1610 +     | \$9.50       | \$9.50       |

Packaged & sold in boxes of 10 and 40. Minimum order is 10. All purchases must be in units of 10 (e.g. 70, 190, 530, etc.)

## CS CableSafe® Safety Hook

| Quantity     | 6<br>55 lbs<br>25 kg | 9<br>77 lbs<br>35 kg | 12<br>220 lbs<br>100 kg | 15<br>340 lbs<br>155 kg |
|--------------|----------------------|----------------------|-------------------------|-------------------------|
| 1 - 2 Boxes  | \$289                | \$350                | \$420                   | \$514                   |
| 3 - 6 Boxes  | \$278                | \$337                | \$405                   | \$495                   |
| 7 - 12 Boxes | \$270                | \$327                | \$392                   | \$481                   |
| 13 Boxes +   | \$264                | \$319                | \$382                   | \$468                   |

## HK

Handi-Klip

50 lbs  
23 kg

\$91

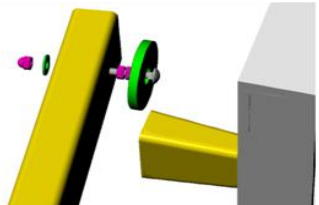
\$85

\$79

\$74

Less Than Box \$13 \$15 \$18 \$21 \$4

## UDG Add-on Installation Kits



HoldTight Magnet Kit



Pipe Kit



Square Tube Kit

## UDG KITS

| Quantity | HoldTight Magnet Kit | Pipe Kit | Square Tube Kit |
|----------|----------------------|----------|-----------------|
| 1 - 24   | \$26                 | \$54     | \$54            |
| 25 - 139 | \$24                 | \$52     | \$52            |
| 140 +    | \$22                 | \$50     | \$50            |



## INTREPID INDUSTRIES INC.

2305 S. Battleground Rd., La Porte, TX 77571

T: 281.479.8301

F: 281.479.3453

sales@intrepidindustries.com

www.intrepidindustries.com

*Offering Quality Products  
Since 1978!*

## Pricing Discounts

Discount pricing is based strictly on the total quantities ordered — within each product family (UDG/T5/CS).

Any combination of Safety Gate sizes may be ordered to receive the discount.

Any combination of T5-J and T5-L Links may be combined to reach a discount level.

Likewise, all boxes of CableSafe® Safety Hooks purchased may be combined to reach one of the Hook discount levels.

**NOTE:** All prices in this brochure are shown in U.S. dollars (USD). Prices do not include shipping, handling, duties or taxes.

## How To Determine What To Order

### Safety Gate – Size of Opening Covered

Gates are available in four standard sizes: UDG-22, UDG-27, UDG-32 and UDG-37. For angle iron guardrail, measure the opening between the guardrails. The gate size should be equal to or greater than the opening. This will insure that when the gate is closed, it will contact the vertical post of the opposite guardrail. Thus, if the opening is 25", a UDG-27 gate would be needed.

For pipe guardrail, we offer an easy-to-install kit that works for both 1 1/2" and 2" pipe. We also offer an easy-to-install kit for square tubing (up to 2 1/2"). Otherwise, you can weld or attach flat plates to the guardrail as shown in several pictures in the literature and on our web site, and then simply order the next larger size gate.

### Toeboard Link – Hardware Options

The Toeboard Link is available in one of two hardware options: T5-J and T5-L. The T5-J includes J-Bolt hardware, and the T5-L includes L-Bolt hardware. All hardware is galvanized.

The T5-J can be installed on all types of grating, except I-Beam or T-Bar style grating.

The T5-L can be installed on all types of grating, except square opening style grating.

The logo for Intrepid Industries, featuring the word "INTREPID" in a bold, yellow, sans-serif font. The text is centered within a dark blue rectangular background that has yellow arrow-like shapes pointing outwards from the top and bottom edges.

## INTREPID INDUSTRIES INC.

2305 S. Battleground Rd.  
La Porte, TX 77571

T: 281.479.8301  
F: 281.479.3453

sales@intrepidindustries.com  
www.intrepidindustries.com

## Terms & Conditions

**Ordering** – It is easy to order from us. Whether by fax, mail, or e-mail, your order will be handled quickly and efficiently. You may also order online from our website. No minimum quantities are required. **All quotes are good for 30 days.**

**Sales Tax** – All shipments within Texas will be taxed at our Deer Park, Texas, tax rate of 7.75%. Tax is based on the total cost of the merchandise plus shipping and handling charges. A resale or tax exemption certificate may be presented in lieu of these charges. No out-of-state tax will be collected.

**Payment Terms** – We accept payment by cash, check, credit card (VISA or MasterCard), ACH, EDI, or wire transfer. **After your first two (2) cash purchases, we accept applications for credit.** Various payment terms are offered as a privilege to our customers. Failure to comply with these terms may result in termination of the credit privilege. **All international orders must be paid in full before shipping.**

**Shipping Policy** – For your convenience and ours, we try to ship orders as soon as possible. All U.S. orders are FOB shipping point. Shipping charges are prepaid and added. Unless otherwise specified, the shipment is insured for the total invoice value. Any discrepancies in the order must be reported within 15 days of receipt. **All international orders are shipped Ex Works.** If shipping is to be arranged by you, you have five (5) days to have it picked up following notification. If pickup is not completed in the five (5) days, the product will be returned to Intrepid's inventory. The production process will need to be rescheduled from the beginning, and a new time of completion will be estimated. If the order is cancelled, for any reason, a restocking fee will apply.

**Damaged Shipments** – Buyer should inspect all items for damages upon arrival. If damage has occurred, buyer should make note on the freight bill and immediately call us. Although our responsibility for loss and damage ceases when the carrier accepts the products for shipment, we will file a claim for you and, if necessary, ship an immediate replacement.

**Return Policy** – While we do not allow returns for credit, exchanges are accepted. BEFORE returning the merchandise, contact our Customer Service Dept. @ 281.479.8301 for a Return Authorization (RA) number. This RA number must be marked on all boxes. Returns must be shipped prepaid, unused and in resalable condition. They are subject to our inspection before the exchange can be executed. All exchange items are subject to a restocking fee per item. No custom-made product can be returned.

**Warranty** – All products are warranted to be free from defects in material and workmanship under normal use and service. Warranty remedies shall be limited solely to repair, replacement, credit or refund, at Intrepid Industries option. This warranty extends to the original buyer only.

# PRODUCT PRICE SCHEDULES

Effective: May 15, 2015

*Prices are subject to change without notice.  
Technical modifications reserved without prior notice.*



**Gravity-Closing  
Safety Gates**

**Toeboard Links**

